

Thurrock Council  
Pupil Place Plan  
2015 2019

## Table of Contents

Introduction	Page 3
School Place Planning	Page 4
Context	Page 5
Schools and Planning Area	Page 7
Primary Forecasts	Page 10
Secondary Forecasts	Page 22
Authority Wide Issues	Page 28
Annex 1: Pupil Place Forecasting Methodology	Page 30
Annex 2: Special and Additional Needs	Page 31
Annex 3: Provision for Pupils out of School	Page 33
Annex 4: Post 16 provision	Page 34
Annex 5: Map Primary Phase Planning Areas	Page 36
Annex 6: Map Secondary Phase Planning Areas	Page 37

**For the purpose of this document, data has been extracted from the  
Autumn 2014 Census**

## **Introduction**

Every Local Authority has a statutory duty to provide a school place for every child living in their Authority whose parents request one.

The number of school places required in Thurrock is regularly reviewed as new data becomes available and an annual plan is published. Pupil forecasts are based on live birth data, information on proposed housing developments, pupil numbers on roll at Thurrock schools and other demographic data.

Where the pupil place forecasts indicate an increased or reduced number of school places are required, this information is fed into the capital programme planning process.

Thurrock Council has recently undertaken a review of the methodology employed to determine pupil place requirements and has introduced new arrangements effective from Spring 2015. A sub group of the Schools Forum has been created to enable Schools and Governor Representatives to work with Council Officers to review pupil place projections and discuss where any additional places should be accommodated. This collaborative working is more important than ever as more schools become their own Admissions Authority and the Council has limited scope to put more places into the schools system.

Thurrock aims to facilitate a range of schools, each with its own individual ethos and identity, to provide parents with a choice of education provision. In addition, the Council seeks to ensure that every child can be offered a school place within reasonable travelling distance from home. To ensure an element of parental preference, the Council plans to provide a small surplus of places.

This document deals with pupil place planning in respect of statutory school education. Young people are now required to stay on beyond 16 years in statutory education. In 2015 the participation age rose to 18 years. This document deals with schools places from 4 years to 16 years. Much post 16 provision is in colleges and in settings other than schools and information on Post 16 provision is contained in Annex 4.

Similarly, this document does not seek to forecast the number of school places required for children with special and additional needs. This work is undertaken separately by specialist Council Officers.

This document does not include planning for nursery provision which is also undertaken separately by the Council.

It is hoped this document will be of use to parents, schools and those interested in development in Thurrock.

## **School Place Planning**

Thurrock Council has a legal duty to provide a sufficient number of school places. Planning pupil places is therefore a very important function of the Local Authority.

The methodology employed to calculate the number of school places required is contained in Annex 1.

A number of factors have come together in recent years to make the task of calculating and providing school places more complex and difficult. These factors include the increase in the birth rate combined with significant migration into the Authority. Many of the families moving into the Authority in recent years have applied for school places outside of the normal admissions round. The number of "In Year" applications are unprecedented. The demand is for places across all year groups and not just at Reception and Year 7.

It is difficult to determine why Thurrock has experienced such a significant increase in families moving into the Authority. Many outer London Boroughs have reported an increase in migration from central London Boroughs as families attempt to find accommodation which is affordable within new welfare benefit constraints. It is possible that Thurrock is also experiencing some inward migration for this reason. Thurrock generally has more affordable accommodation than London Boroughs but is still within reasonable travelling distance of the city. A significant number of families are also arriving from outside the United Kingdom.

The Council can plan for children born in the Authority who will require places in 4 years' time. However, it is more difficult to plan for an influx of families who arrive with no prior warning and outside of the normal application process.

The Council's ability to put additional places into the school system is limited by the small number of Community schools remaining in the Authority. Of the 11 state funded secondary schools in the Authority 9 are academies, 1 is a Free School and 1 is a Voluntary Aided School. There are no community secondary schools (i.e. under the control of the Council). Of the existing 39 primary schools in Thurrock only 9 are Community schools and remain under the control of the Council. Fortunately, the Council has a good relationship with schools and works with them to address pupil place issues.

The creation of the Pupil Place Planning Sub Group of the Schools Forum will formalise the existing excellent relationship between the Local Authority and schools in the Authority.



## Context

Thurrock is located on the north bank of the river Thames, twenty miles east of central London and has 18 miles of river front. More than half of the land in Thurrock is designated Green Belt land.

Much of the riverside area of Thurrock is highly urbanised with a mixture of industrial and residential development at the west and eastern ends of the Authority. The Authority is characterised by five main urban communities plus a large rural area containing five main villages. The urban communities are:

- Grays and the adjacent Chafford Hundred
- West Thurrock and Purfleet
- Stanford-Le-Hope and Corringham
- Tilbury and Chadwell St Mary
- Aveley and Ockendon

Thurrock also boasts a large retail park at Lakeside.

South Essex College opened in September 2014. The new £45 million Thurrock Campus is a state-of-the-art facility, located on Grays High Street in the heart of the town centre, with teaching facilities second to none, with specially designed workshops for construction and engineering, as well as art & design.

There is a thriving arts sector locally which includes High House Production Park, a world class facility comprising: the Royal Opera House Production Workshop; the Backstage Centre, home of the creative and cultural sector skills; ACME artist studios and the Royal Opera House Costume Archive (opening in Easter 2015). There is potential to offer exciting opportunities to schools to have strong links with this local artistic hub along with the digital industries associated with it.

Thurrock is home to the largest deep water port and Business Park, based at Stanford-le-Hope. The project, when completed, will create a world class deep sea Container Port with a Business Park.

A stunning and innovative visitor centre for the Thurrock Thameside Nature Park has been built on a former landfill site, with superb views over Mucking Flats and the Thames Estuary. There are footpaths and cycle ways in 120 acres of nature park, which will expand to 845 acres. Great for birdwatching – and ship watching.

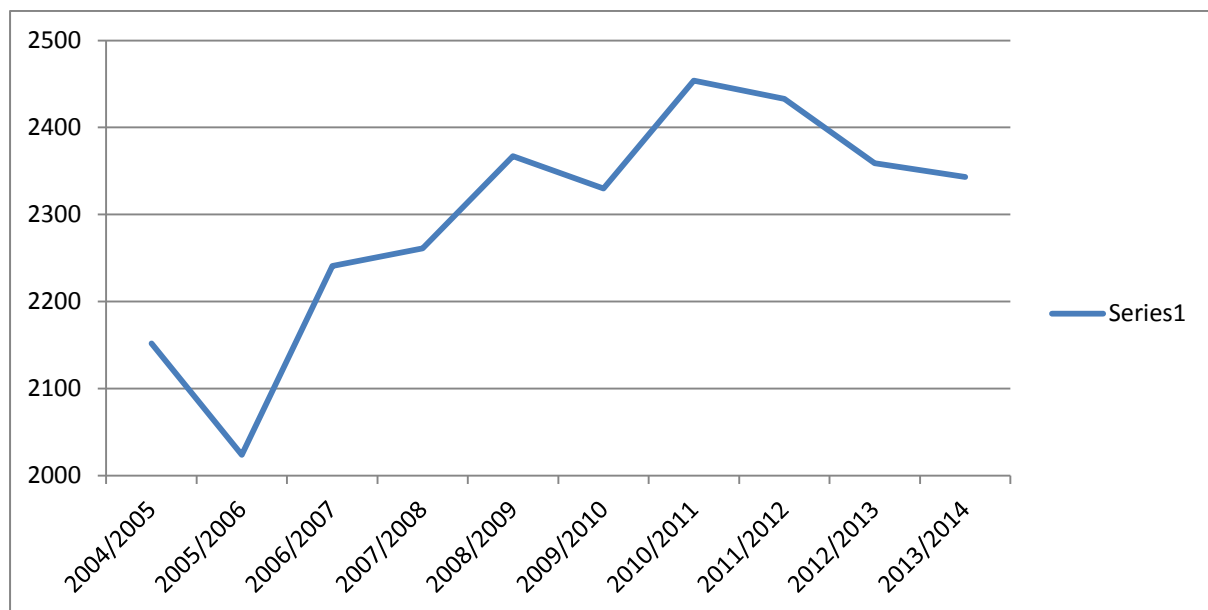
The Authority benefits from good transport links. The M25 passes through the Authority as does the A13 trunk road from London to Southend. There are also 7 railway stations in the Authority on the line which connects Southend and Fenchurch Street in central London.

Thurrock has a young population. The 2011 census published by the ONS states that 26.6% of the Thurrock population is aged 0 to 19. Those aged between 20 and 44, i.e. most likely to have children, make up 36.5% of the population. This compares with 60 to 84 year olds who make up only 16.4% of the Thurrock population.

The table below demonstrates the conversion of live births in Thurrock to demand for Reception places.

<b>Year of Birth</b>	<b>2003-04</b>	<b>2004-05</b>	<b>2005-06</b>	<b>2006-07</b>	<b>2007-08</b>	<b>2008-09</b>	<b>2009-10</b>
Number of live births in the authority	1,938	2,152	2,024	2,241	2,261	2,367	2,330
<b>Year entering school at 4+</b>	<b>2008-09</b>	<b>2009-10</b>	<b>2010-11</b>	<b>2011-12</b>	<b>2012-13</b>	<b>2013-14</b>	<b>2014-15</b>
Number of children admitted into reception	1,709	1,844	1,884	2,237	2,263	2,321	2,277
Historical uptake factor	83.85	83.30	92.57	99.82	100.09	98.02	97.9

The birth rate in Thurrock has increased significantly since 2005/2006 as demonstrated in the table below.



## **Schools and Planning Areas**

### **Schools**

There are currently 39 state maintained primary schools in Thurrock:

- 22 Academies
- 9 Community Schools
- 5 Voluntary Aided Schools
- 1 Voluntary Controlled
- 1 Foundation
- 1 Free School

Full details of the schools and the oversubscription criteria applied to each one is available in the Council's Admissions Book. This publication also contains information on making an application for a school place and can be accessed on the Council's website.

There are currently 11 state maintained secondary schools in Thurrock:

- 9 Academies
- 1 Voluntary Aided School
- 1 Free School

The Free School referred to above is the Harris Federation Free School. It will open with 120 places in September 2015. The places will be accommodated in temporary accommodation on the site of the existing Harris Academy Chafford Hundred. The school will eventually offer 180 places for each year group when the permanent building is completed. The site for the new school is not confirmed at the time of writing and updated information is available from the Harris Academy website.

Each Academy, Free School and Voluntary Aided-School is its own Admissions Authority. The Council is the Admissions Authority for Community Schools and Voluntary Controlled Schools. In respect of Voluntary Aided Schools the governing body of the school determines admission arrangements. For Academies and Free Schools, the relevant Academy Trust is the Admission Authority. Each individual Admissions Authority applies its own oversubscription criteria to applications and determines which applicants to offer places to.

Applications for all state funded secondary schools in Thurrock are made via the co-ordinated admissions process which is administered by the Council.

## Pupil Place Planning Areas

The Council's 2014 review of Pupil Place Planning methodology resulted in the decision to have fewer but larger planning areas. Planning areas with only two or three schools did not provide the flexibility required in the more complex context in which the Council is now operating.

The Council has decided to use 5 planning areas for primary schools that, where possible, follow existing natural and road boundaries.

### Primary Planning Areas

<p style="text-align: center;"><b>Aveley, Ockendon and Purfleet</b></p> <ul style="list-style-type: none"> <li>• Aveley Primary</li> <li>• Benyon Primary</li> <li>• Bonnygate Primary</li> <li>• Dilkes Academy</li> <li>• Holy Cross Catholic Primary</li> <li>• Kenningtons Primary Academy</li> <li>• Purfleet Primary Academy</li> <li>• Shaw Primary Academy</li> <li>• Somers Heath Primary</li> </ul>	<p style="text-align: center;"><b>Grays</b></p> <ul style="list-style-type: none"> <li>• Belmont Castle Academy</li> <li>• Deneholm Primary</li> <li>• Harris Primary Academy Chafford Hundred</li> <li>• Harris Primary Academy Mayflower</li> <li>• Little Thurrock Primary</li> <li>• Quarry Hill Academy</li> <li>• St Thomas of Canterbury Catholic Primary</li> <li>• Stifford Clays Primary</li> <li>• Thameside Primary</li> <li>• Tudor Court Primary</li> <li>• Warren Primary</li> <li>• West Thurrock Academy</li> </ul>
<p style="text-align: center;"><b>Tilbury</b></p> <ul style="list-style-type: none"> <li>• Chadwell St Mary Primary</li> <li>• East Tilbury Primary &amp; Nursery</li> <li>• The Gateway Primary Free</li> <li>• Herringham Primary Academy</li> <li>• Lansdowne Primary Academy</li> <li>• St Mary's Catholic Primary</li> <li>• Tilbury Pioneer Academy</li> <li>• Woodside Academy</li> </ul>	<p style="text-align: center;"><b>Corringham and Stanford-Le-Hope</b></p> <ul style="list-style-type: none"> <li>• Abbots Hall Primary Academy</li> <li>• Arthur Bugler Primary</li> <li>• Corringham Primary</li> <li>• Giffards Primary</li> <li>• Graham James Primary Academy</li> <li>• St Joseph's Catholic Primary</li> <li>• Stanford-le-Hope Primary</li> </ul>
<p style="text-align: center;"><b>Rural areas</b></p> <ul style="list-style-type: none"> <li>• Bulphan C of E Primary</li> <li>• Horndon on the Hill C of E Primary</li> <li>• Orsett C of E Primary</li> </ul>	

The planning areas for Primary are shown on the map in Annex 5.

The Primary forecast whole school is shown in Annex 7

The Primary Reception forecast is shown in Annex 8

## Secondary Planning Areas

<b>West</b>	<b>Central</b>
<ul style="list-style-type: none"><li>• The Ockendon School</li><li>• Ormiston Park Academy</li></ul>	<ul style="list-style-type: none"><li>• The Gateway Academy</li><li>• Grays Convent High School</li><li>• The Hathaway Academy</li><li>• Harris Academy Chafford Hundred</li><li>• Harris Federation Free School</li><li>• William Edwards School</li></ul>

<b>East</b>
<ul style="list-style-type: none"><li>• Gable Hall School</li><li>• Hassenbrook Academy</li><li>• St Clere's School</li></ul>

The planning areas for Secondary are shown on the map in Annex 6.

The Secondary forecast whole school is shown in Annex 9.

The Secondary forecast for Year 7 is shown in Annex 10

## **Primary Forecasts**

The whole school projections for each primary school planning area have been calculated using the actual number of children on roll in the schools in the October 2014 census and adding in the child yield from planned dwellings and adding 7% contingency. This degree of contingency is required to enable the schools to absorb the number of pupils we anticipate will arrive in the Authority from elsewhere in the UK and abroad in the September 2015/16 academic year and beyond. It also provides a margin to facilitate a degree of parental preference. The impact of inward migration will be closely monitored and forecasts adjusted accordingly.

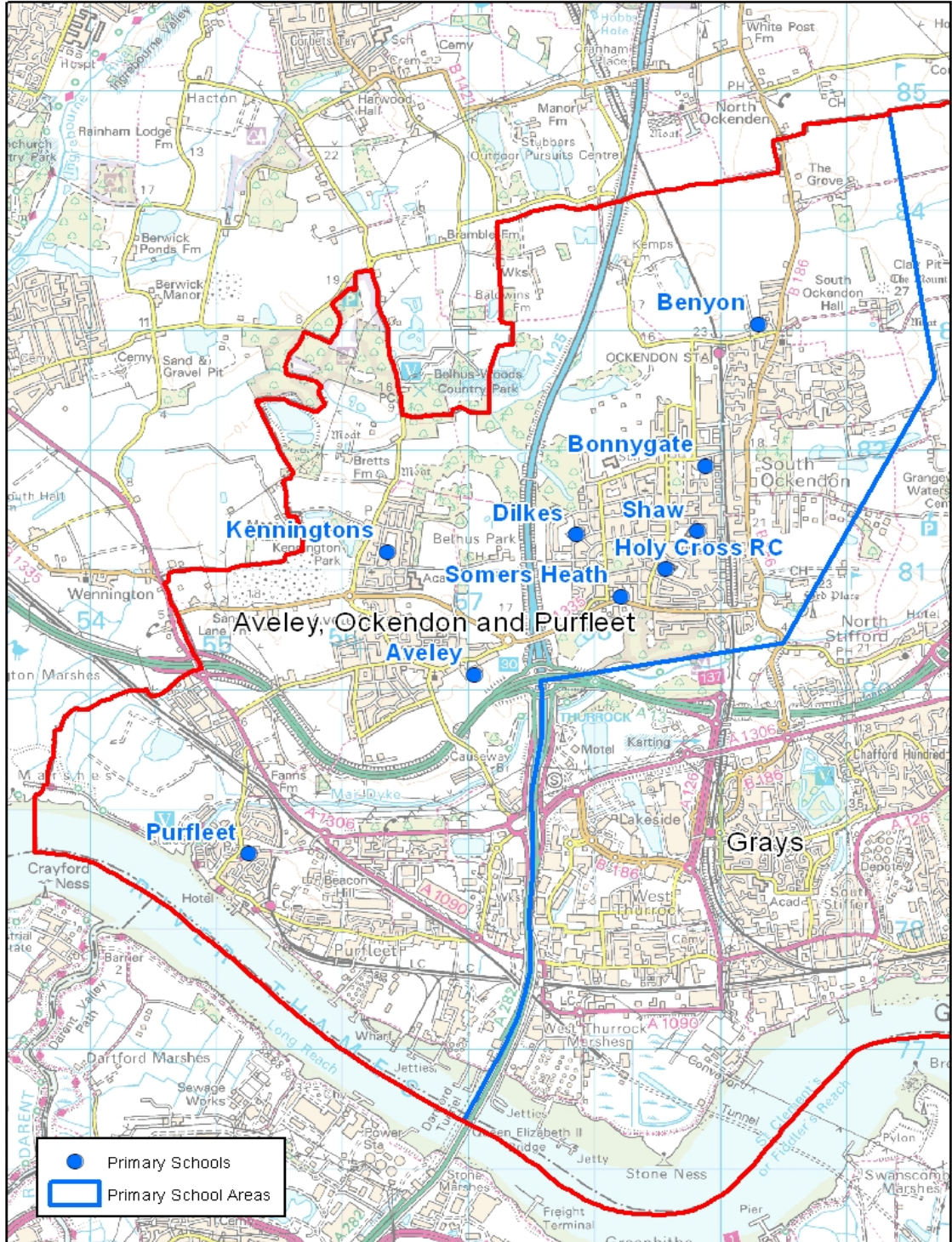
The Reception place forecasts were calculated on the number of live births in the Authority. We have historical data on the number of live births and the percentage of the children born who subsequently required a place in a Thurrock Reception class. We can, therefore, reasonably determine the number of local residents who will require a Reception place. What is more difficult to predict is the number of children of Reception age who will move into the Authority from elsewhere. The migration trend over the last three years indicates that we must make 5% provision in Reception places to accommodate these children. A 7% contingency across the board in the primary phase will ensure these children can be accommodated and, provide a small margin for parental preference.

By planning to accommodate a similar number of children arriving in the Authority to that experienced in the last three years we can avoid the need to create places at short notice.

# Aveley, Ockendon and Purfleet

thurrock.gov.uk

UNCLASSIFIED -  
Aveley, Ockendon and Purfleet



- Primary Schools
- ▭ Primary School Areas

© Crown copyright and database rights 2015 Ordnance Survey 100025457

Scale 1:55,000

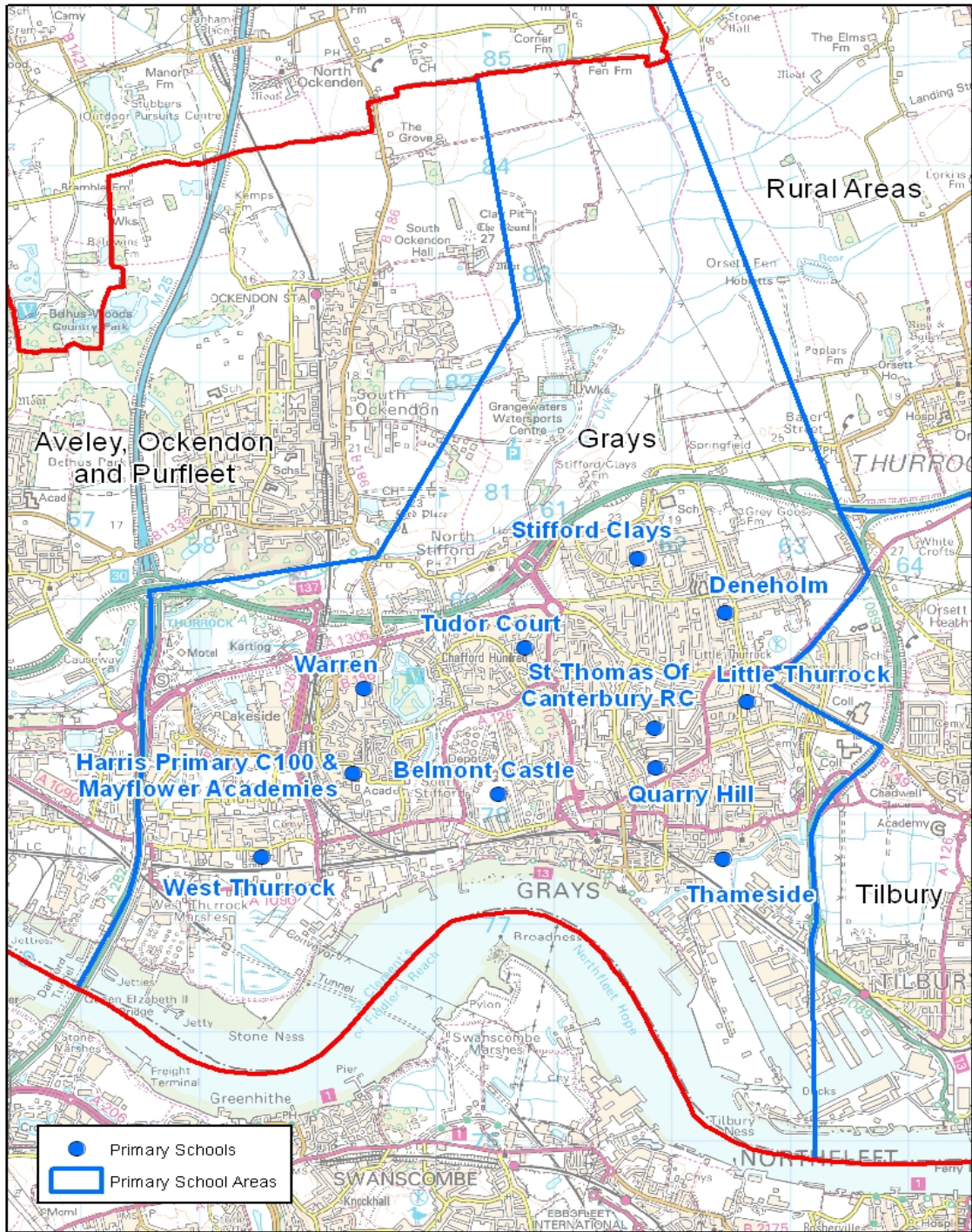
<b>Aveley, Ockendon &amp; Purfleet</b>		<b>WHOLE SCHOOL FORECAST</b>				
<b>School</b>	<b>PAN</b>	<b>Sep-15</b>	<b>Sep-16</b>	<b>Sep-17</b>	<b>Sep-18</b>	<b>Sep-19</b>
Aveley	420	434	435	461	455	431
Benyon	210	214	224	213	216	225
Bonnygate	420	359	375	434	457	462
Dilkes	420	418	414	426	427	428
Holy Cross	315	289	290	295	296	299
Kenningtons	420	426	449	489	503	487
Purfleet	630	440	469	490	517	539
Shaw	420	413	405	407	402	405
Somers Heath	210	213	209	205	198	196
	<b>3,465</b>	<b>3,206</b>	<b>3,270</b>	<b>3,420</b>	<b>3,471</b>	<b>3,472</b>
<b>5% contingency</b>		<b>3,366</b>	<b>3,434</b>	<b>3,591</b>	<b>3,645</b>	<b>3,646</b>
<b>7% contingency</b>		<b>3,430</b>	<b>3,499</b>	<b>3,659</b>	<b>3,714</b>	<b>3,715</b>
<b>10% contingency</b>		<b>3,527</b>	<b>3,597</b>	<b>3,762</b>	<b>3,818</b>	<b>3,819</b>

<b>Aveley, Ockendon &amp; Purfleet</b>		<b>RECEPTION FORECAST</b>				
<b>School</b>	<b>PAN</b>	<b>Sep-15</b>	<b>Sep-16</b>	<b>Sep-17</b>	<b>Sep-18</b>	<b>Sep-19</b>
Aveley	60	69	55	61	62	62
Benyon	30	36	38	27	32	33
Bonnygate	60	53	55	69	79	64
Dilkes	60	59	54	72	61	62
Holy Cross	45	45	45	45	45	45
Kenningtons	60	80	73	69	73	74
Purfleet	90	89	84	73	74	80
Shaw	60	61	52	61	55	57
Somers Heath	30	29	30	27	23	27
	<b>495</b>	<b>521</b>	<b>486</b>	<b>504</b>	<b>504</b>	<b>504</b>
<b>5% contingency</b>		<b>547</b>	<b>510</b>	<b>529</b>	<b>529</b>	<b>529</b>
<b>7% contingency</b>		<b>557</b>	<b>520</b>	<b>539</b>	<b>539</b>	<b>539</b>
<b>10% contingency</b>		<b>573</b>	<b>535</b>	<b>554</b>	<b>554</b>	<b>554</b>

There is pressure across the board in this planning area. In the 2014/15 academic year there are only 18 Reception places available across the area, 16 of which are at Purfleet School which is geographically separated from the other schools in this area. There may have to be additional Year 1, Year 2 and Year 4 places created from September 2015. The forecast for Reception places indicates that additional places will be required at Reception from September 2015.



# Grays



## Grays

Grays		WHOLE SCHOOL FORECAST				
School	PAN	Sep-15	Sep-16	Sep-17	Sep-18	Sep-19
Belmont Castle	690	703	727	720	694	673
Deneholm	420	415	412	437	444	451
Harris Chafford Hundred	630	603	579	557	520	494
Harris Mayflower	630	119	179	229	276	329
Little Thurrock	630	598	620	647	636	640
Quarry Hill	420	527	553	568	560	551
St Thomas'	630	628	629	629	629	630
Stifford Clays	630	691	706	723	752	741
Thameside	630	597	621	640	638	648
Tudor Court	840	755	771	780	748	726
Warren	420	453	432	426	409	408
West Thurrock	420	529	572	616	566	562
	<b>6,990</b>	<b>6,618</b>	<b>6,801</b>	<b>6,972</b>	<b>6,872</b>	<b>6,853</b>
<b>5% contingency</b>		<b>6,949</b>	<b>7,141</b>	<b>7,321</b>	<b>7,216</b>	<b>7,196</b>
<b>7% contingency</b>		<b>7,081</b>	<b>7,277</b>	<b>7,460</b>	<b>7,353</b>	<b>7,333</b>
<b>10% contingency</b>		<b>7,280</b>	<b>7,481</b>	<b>7,669</b>	<b>7,559</b>	<b>7,538</b>

Grays		RECEPTION FORECAST				
School	PAN	Sep-15	Sep-16	Sep-17	Sep-18	Sep-19
Belmont Castle	90	93	110	97	94	99
Deneholm	60	57	56	86	67	67
Harris Chafford Hundred	90	70	67	67	52	64
Harris Mayflower	90	53	60	50	47	53
Little Thurrock	90	97	97	101	79	94
Quarry Hill	60	83	86	75	79	81
St Thomas'	90	90	90	90	90	90
Stifford Clays	90	95	106	108	117	107
Thameside	90	100	92	100	84	94
Tudor Court	120	95	105	100	89	97
Warren	60	55	62	55	58	58
West Thurrock	60	72	83	102	74	83
	<b>990</b>	<b>960</b>	<b>1,014</b>	<b>1,031</b>	<b>930</b>	<b>987</b>
<b>5% contingency</b>		<b>1,008</b>	<b>1,065</b>	<b>1,083</b>	<b>977</b>	<b>1,036</b>
<b>7% contingency</b>		<b>1,027</b>	<b>1,085</b>	<b>1,103</b>	<b>995</b>	<b>1,056</b>
<b>10% contingency</b>		<b>1,056</b>	<b>1,115</b>	<b>1,134</b>	<b>1,023</b>	<b>1,086</b>

Grays primary planning area is also under pressure. Thameside Primary School opened an additional Year 3 class and an additional Year 1 class mid academic year (2014/15) to help meet demand in the area.

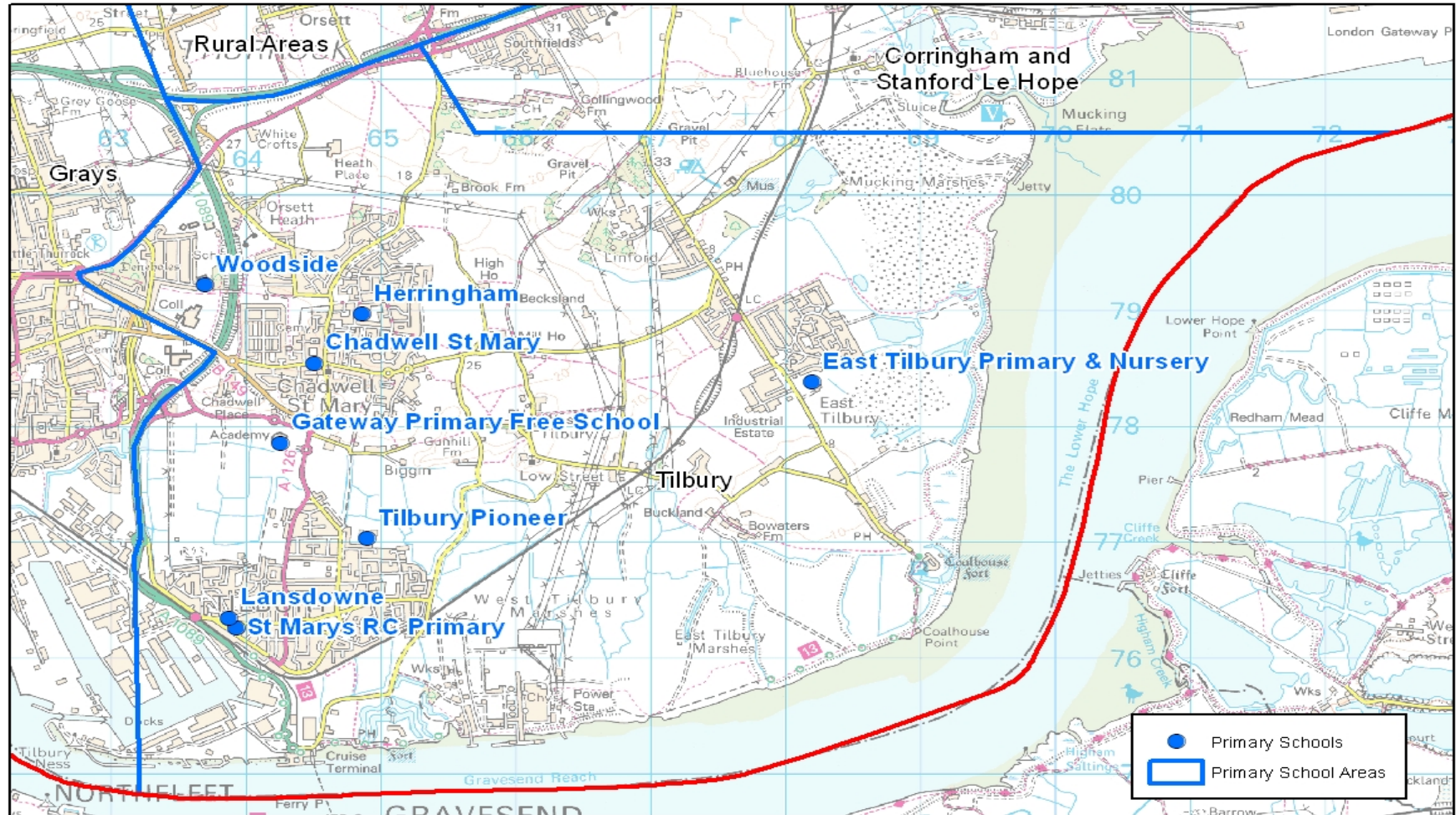
There will be particular pressure on Reception, Year 3 and Year 5 places in the 2015/16 academic year.

The September 2015 PAN for Grays Planning Area includes 90 places in Reception and Year 1 at the new Harris Mayflower Academy. The whole school PAN will increase as this school builds up the number of places as children progress through the school.

This school will provide an additional 60 Reception places from September 2016. The additional 60 Reception places will relieve the pressure on places in this year group.

**Tilbury**





## Tilbury

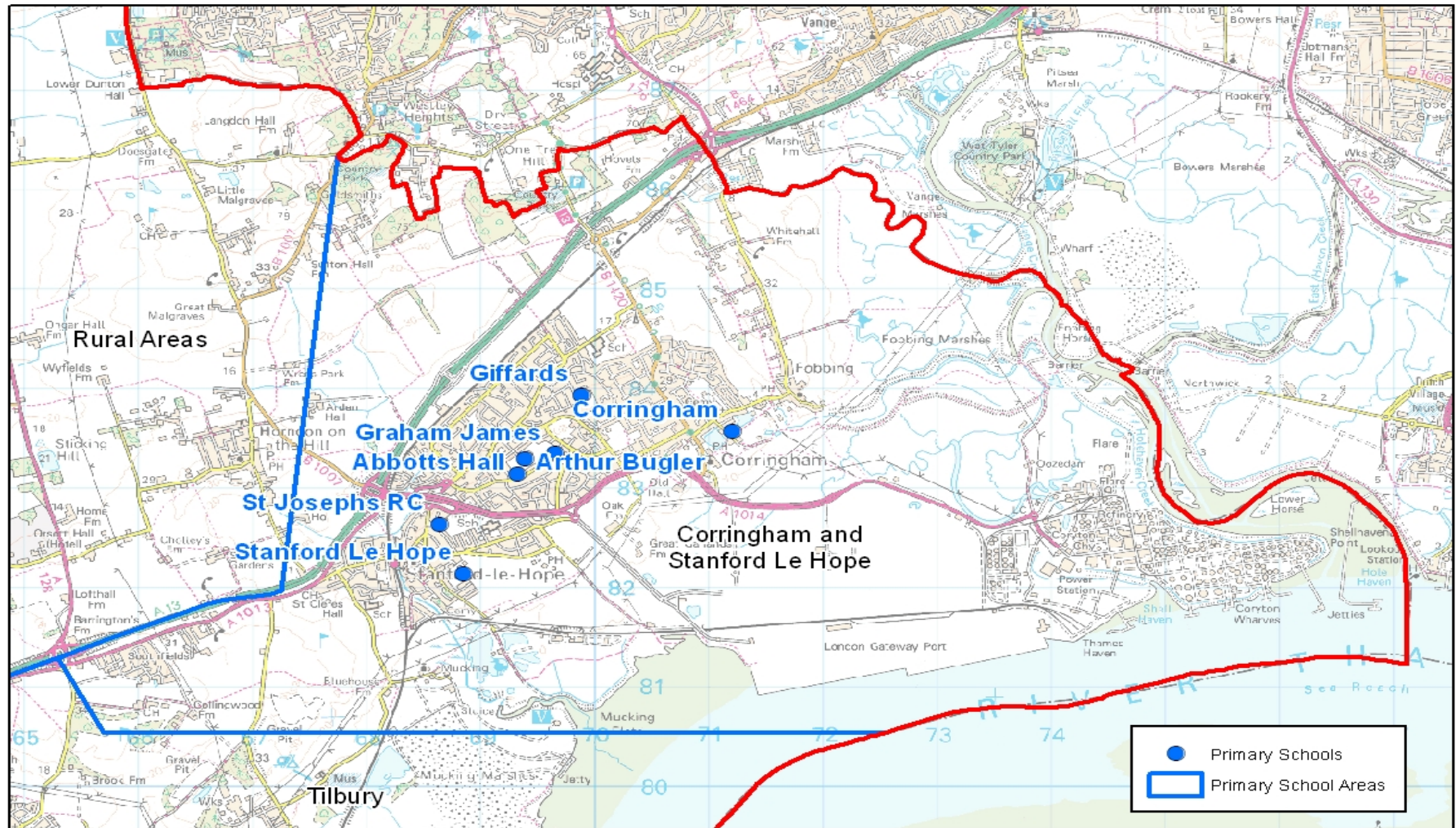
Tilbury		WHOLE SCHOOL FORECAST				
School	PAN	Sep-15	Sep-16	Sep-17	Sep-18	Sep-19
Chadwell St Mary	210	208	206	214	232	238
East Tilbury	630	558	593	597	569	594
Gateway	420	506	477	451	420	421
Herringham	420	383	392	394	392	390
Lansdowne	420	605	589	596	595	585
St Mary's	210	255	243	234	229	219
Tilbury Pioneer	420	214	292	349	375	383
Woodside	420	552	559	575	628	668
	<b>3,150</b>	<b>3,281</b>	<b>3,351</b>	<b>3,410</b>	<b>3,440</b>	<b>3,498</b>
<b>5% contingency</b>		<b>3,445</b>	<b>3,519</b>	<b>3,581</b>	<b>3,612</b>	<b>3,673</b>
<b>7% contingency</b>		<b>3,511</b>	<b>3,586</b>	<b>3,649</b>	<b>3,681</b>	<b>3,743</b>
<b>10% contingency</b>		<b>3,609</b>	<b>3,686</b>	<b>3,751</b>	<b>3,784</b>	<b>3,848</b>

Tilbury		RECEPTION FORECAST				
School	PAN	Sep-15	Sep-16	Sep-17	Sep-18	Sep-19
Chadwell St Mary	30	32	27	36	48	36
East Tilbury	90	85	89	76	67	79
Gateway	60	60	60	60	60	60
Herringham	60	54	59	55	58	57
Lansdowne	90	77	81	91	88	84
St Mary's	30	30	30	30	30	30
Tilbury Pioneer	60	81	78	57	26	61
Woodside	60	105	98	76	113	98
	<b>480</b>	<b>524</b>	<b>522</b>	<b>481</b>	<b>490</b>	<b>505</b>
<b>5% contingency</b>		<b>550</b>	<b>548</b>	<b>505</b>	<b>515</b>	<b>530</b>
<b>7% contingency</b>		<b>561</b>	<b>559</b>	<b>515</b>	<b>524</b>	<b>540</b>
<b>10% contingency</b>		<b>576</b>	<b>574</b>	<b>529</b>	<b>539</b>	<b>556</b>

Woodside Academy has opened a Year 2 class mid academic year to meet demand locally. The PAN for September 2015 has therefore been adjusted by this number. We predict a shortfall of places in Year 4 in the 2015/16 academic year.

## Corringham and Stanford Le Hope





## Corringham and Stanford Le Hope

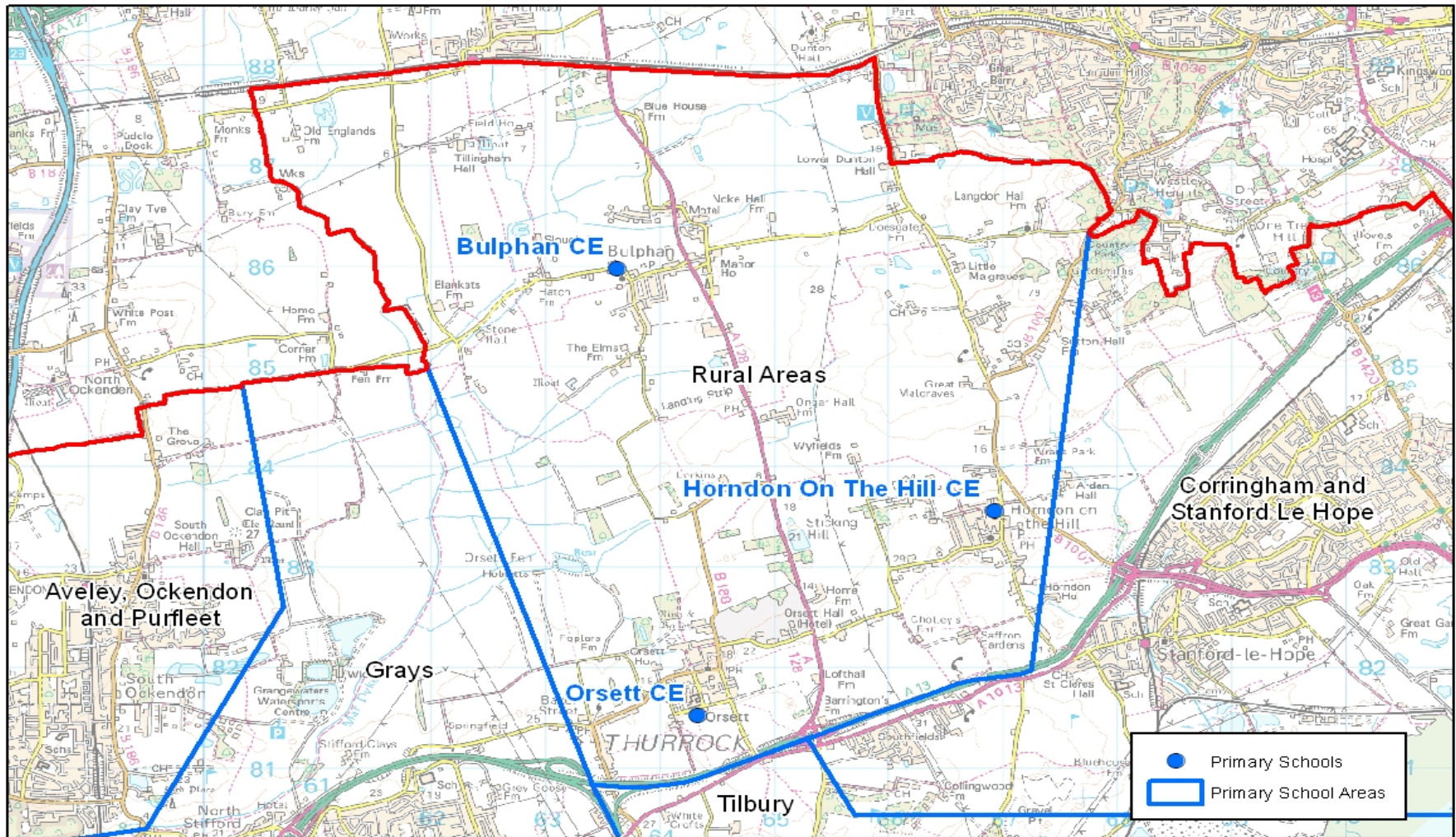
Corringham & Stanford le Hope		WHOLE SCHOOL FORECAST				
School	PAN	Sep-15	Sep-16	Sep-17	Sep-18	Sep-19
Abbots Hall	210	214	213	208	206	205
Arthur Bugler	420	419	410	402	412	410
Corringham	420	447	451	453	473	486
Giffards	420	405	396	376	361	348
Graham James	420	274	276	279	282	291
St Joseph's	210	268	258	248	238	228
Stanford-le-Hope	420	400	375	392	384	381
	<b>2,520</b>	<b>2,427</b>	<b>2,379</b>	<b>2,358</b>	<b>2,356</b>	<b>2,349</b>
<b>5% contingency</b>		<b>2,548</b>	<b>2,498</b>	<b>2,476</b>	<b>2,474</b>	<b>2,466</b>
<b>7% contingency</b>		<b>2,597</b>	<b>2,546</b>	<b>2,523</b>	<b>2,521</b>	<b>2,513</b>
<b>10% contingency</b>		<b>2,670</b>	<b>2,617</b>	<b>2,594</b>	<b>2,592</b>	<b>2,584</b>

Corringham & Stanford le Hope		RECEPTION FORECAST				
School	PAN	Sep-15	Sep-16	Sep-17	Sep-18	Sep-19
Abbots Hall	30	32	30	25	28	29
Arthur Bugler	60	62	50	51	70	58
Corringham	60	93	62	62	83	75
Giffards	60	47	50	40	45	46
Graham James	60	56	32	34	33	39
St Joseph's	30	30	30	30	30	30
Stanford-le-Hope	60	54	54	51	67	57
	<b>360</b>	<b>374</b>	<b>308</b>	<b>293</b>	<b>356</b>	<b>334</b>
<b>5% contingency</b>		<b>393</b>	<b>323</b>	<b>308</b>	<b>374</b>	<b>351</b>
<b>7% contingency</b>		<b>400</b>	<b>330</b>	<b>314</b>	<b>381</b>	<b>357</b>
<b>10% contingency</b>		<b>411</b>	<b>339</b>	<b>322</b>	<b>392</b>	<b>367</b>

There is pressure on Reception places in this planning area in September 2015. The Council is currently in discussion with schools regarding where the additional places could best be accommodated. The matter will be discussed with head teacher and governor representatives at the Schools Forum Sub Group before a decision is reached.

The whole school forecast suggests there will be a shortfall of places in September 2015 if the 7% contingency demand figure is used. This issue will be closely monitored to identify where additional places may be required as families arrive in the Borough







## Rural Area

Rural		WHOLE SCHOOL FORECAST				
School	PAN	Sep-15	Sep-16	Sep-17	Sep-18	Sep-19
Bulphan	84	100	102	99	95	90
Horndon-on-the-Hill	210	204	200	190	196	192
Orsett	210	221	231	217	201	199
	504	525	533	506	492	481
5% contingency		551	560	531	517	505
7% contingency		562	570	541	526	515
10% contingency		578	586	557	541	529

Rural		RECEPTION FORECAST				
School	PAN	Sep-15	Sep-16	Sep-17	Sep-18	Sep-19
Bulphan	12	12	12	12	12	12
Horndon-on-the-Hill	30	27	27	21	33	27
Orsett	30	34	41	16	19	28
	72	73	80	49	64	67
5% contingency		77	84	51	67	70
7% contingency		78	86	52	68	72
10% contingency		80	88	54	70	74

The live birth data for this planning area indicates that there will be a small shortfall in Reception places in September 2015. It is expected that any excess demand will be met in other planning areas.

### Primary Forecast Summary

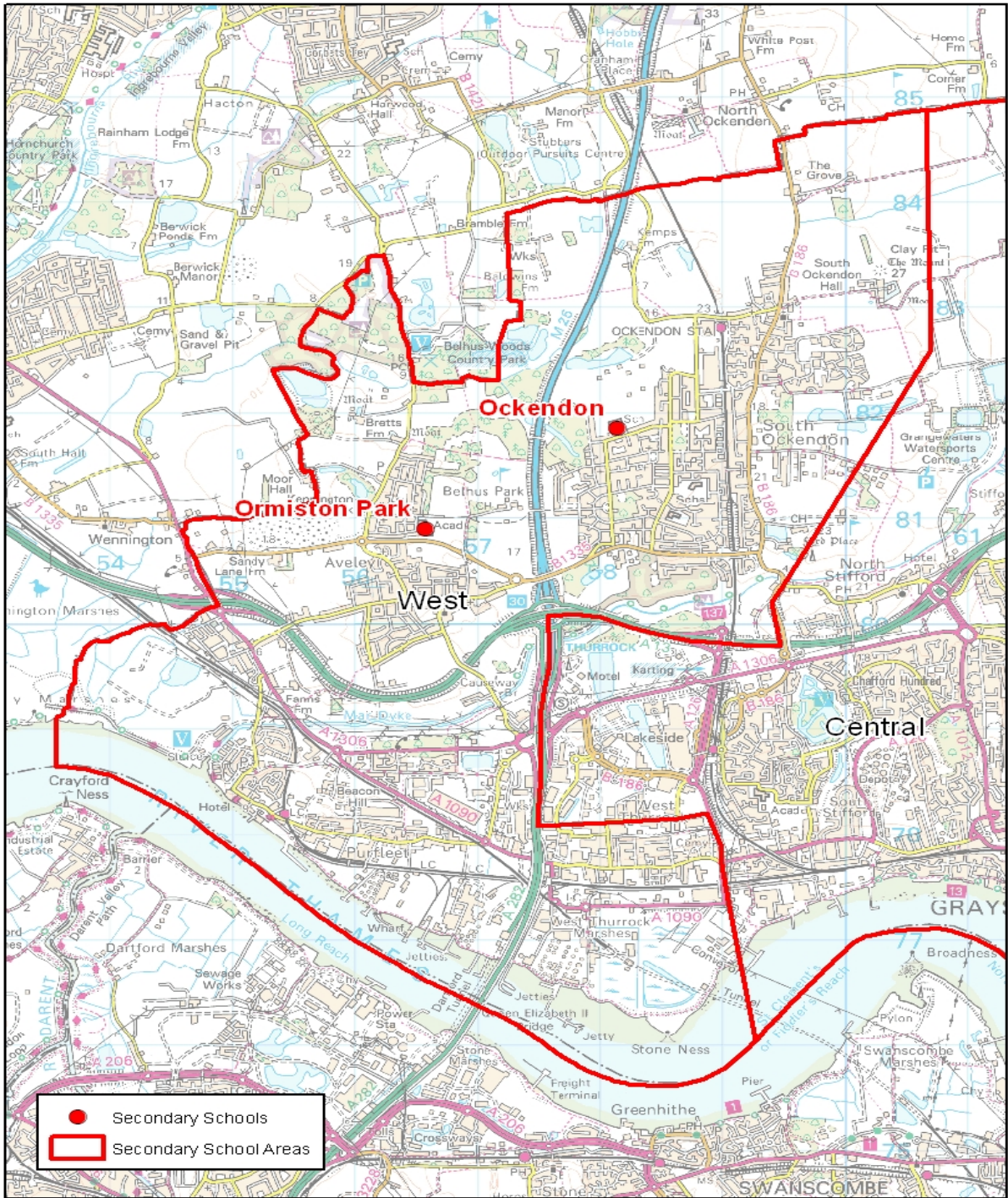
There is pressure on primary phase places in most year groups in different areas. The inward migration experienced in recent years appears to have had a more significant impact on primary places than secondary places. This may be because we have had surplus places in our secondary schools which could absorb the newcomers or it may be that the families arriving in Thurrock have younger children.

The ONS 2011 census data demonstrates that Thurrock has a significant population under 19 years. The largest percentage of the adult population is of child bearing age and therefore it unlikely that the demand for school places will reduce in the near future.

The Council will continue to monitor the impact of inward migration in order to respond to changing circumstances.

Future additional places will almost certainly be required across the local Authority.

# Secondary Forecast



## West Planning Area

West Planning Area	WHOLE SCHOOL FORECAST					
School	PAN	Sep-15	Sep-16	Sep-17	Sep-18	Sep-19
Ormiston Park Academy	900	455	488	545	563	548
The Ockendon Academy	1,050	1,036	1,060	1,085	1,123	1,156
	1,950	1,491	1,548	1,630	1,686	1,704
<b>5% contingency</b>		1,566	1,625	1,712	1,771	1,790
<b>7% contingency</b>		1,596	1,656	1,745	1,805	1,824
<b>10% contingency</b>		1,641	1,703	1,794	1,855	1,875

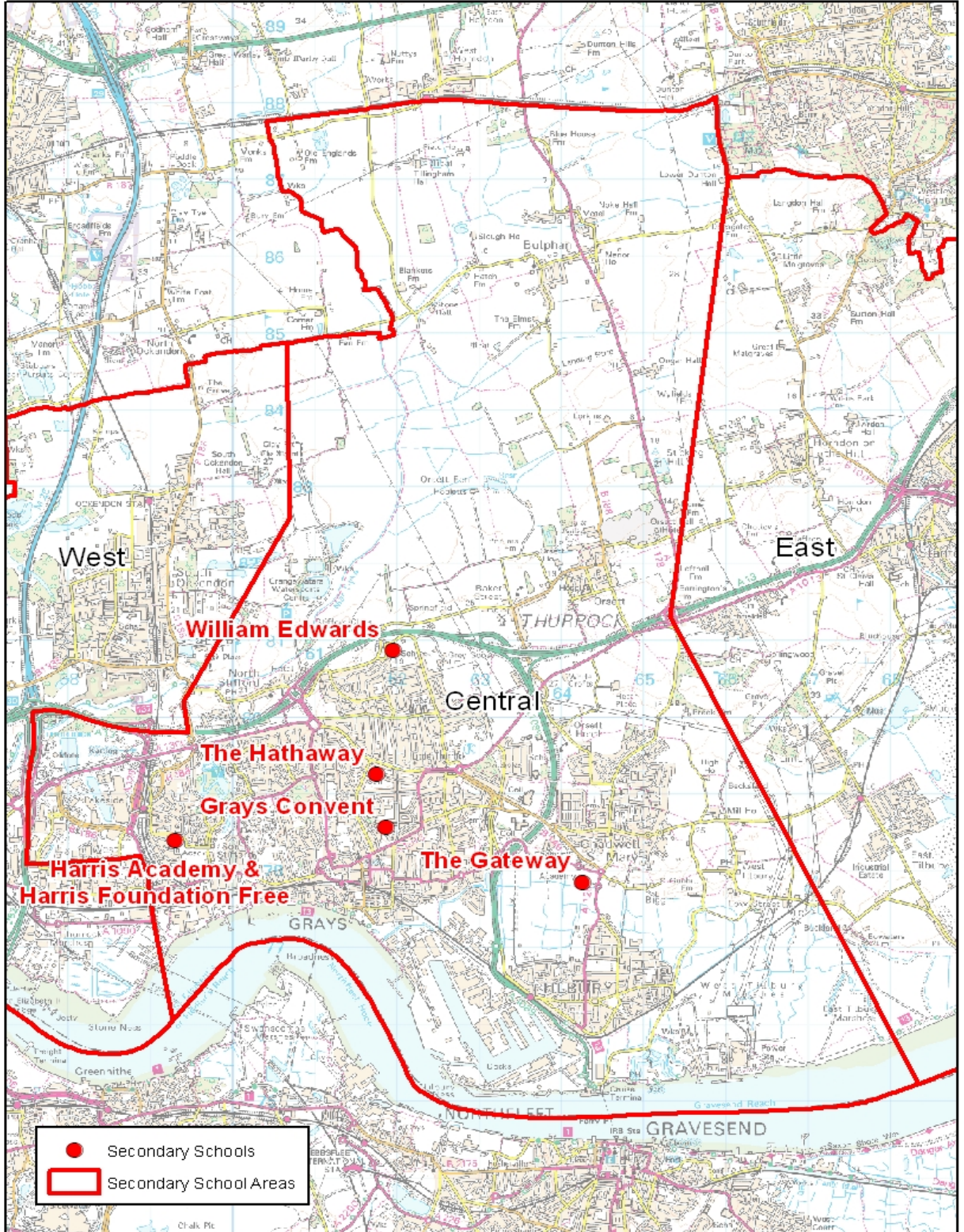
West Planning Area	YEAR 7 FORECAST					
School	PAN	Sep-15	Sep-16	Sep-17	Sep-18	Sep-19
Ormiston Park Academy	180	103	106	104	117	118
The Ockendon Academy	210	216	222	216	244	246
	390	319	328	320	361	364
<b>5% contingency</b>		335	345	336	379	382
<b>7% contingency</b>		342	351	342	386	389
<b>10% contingency</b>		351	361	352	397	400



# Central Planning Area

thurrock.gov.uk

UNCLASSIFIED - Central



© Crown copyright and database rights 2015 Ordnance Survey 100025457

Scale 1:85,000

## Central Planning Area

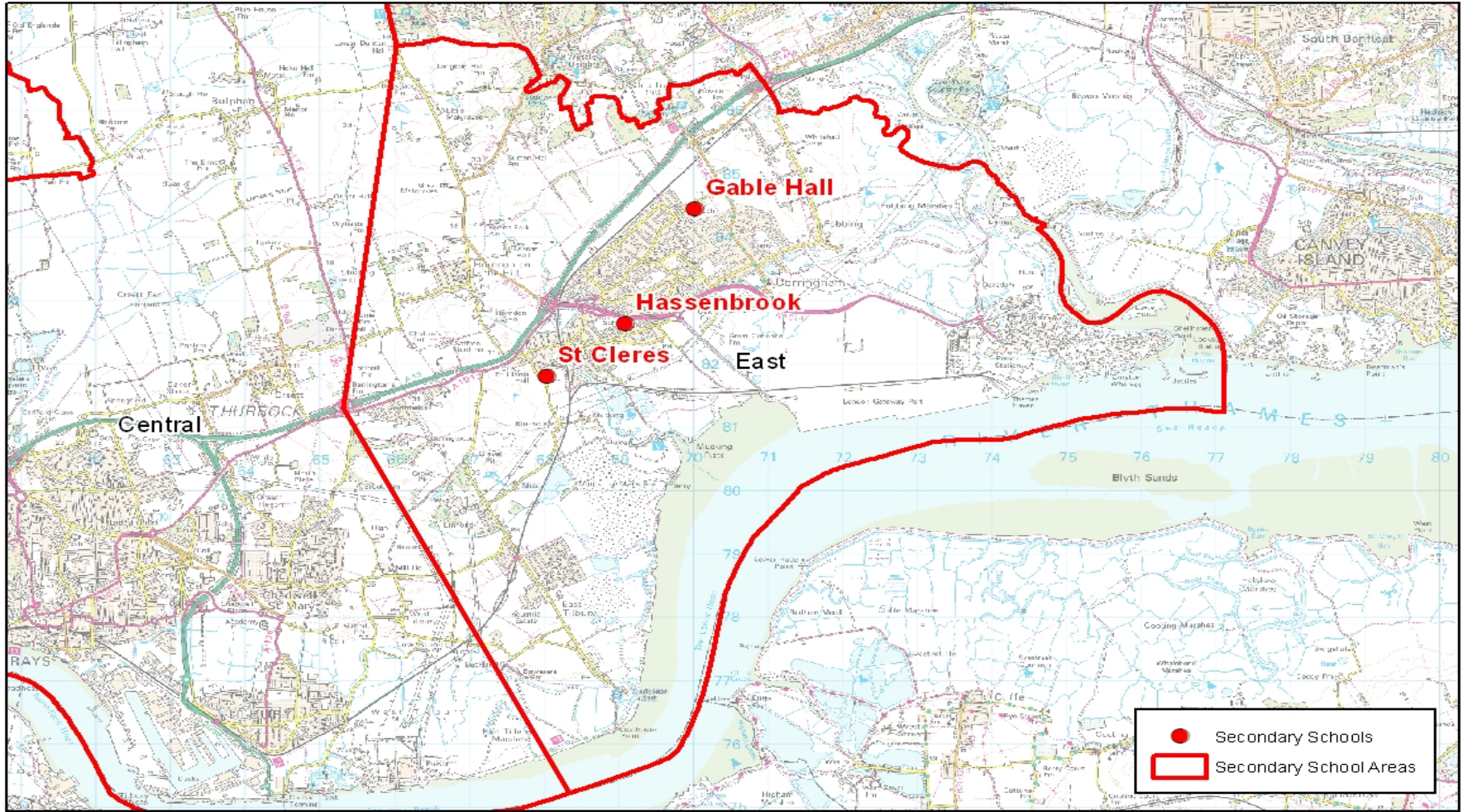
Central Planning Area	WHOLE SCHOOL FORECAST					
School	PAN	Sep-15	Sep-16	Sep-17	Sep-18	Sep-19
Grays Convent	620	505	488	477	511	527
Harris Academy Chafford Hundred	900	920	937	939	960	989
Harris Free School			120	240	360	480
The Gateway Academy	1,050	1,022	1,043	1,073	1,105	1,134
The Hathaway Academy	900	671	673	680	725	747
William Edwards	1,200	1,219	1,252	1,275	1,313	1,349
	4,790	4,337	4,513	4,684	4,974	5,226
<b>5% contingency</b>		4,680	4,864	5,045	5,349	5,611
<b>7% contingency</b>		4,769	4,957	5,141	5,451	5,718
<b>10% contingency</b>		4,902	5,096	5,285	5,604	5,879

Central Planning Area	YEAR 7 FORECAST					
School	PAN	Sep-15	Sep-16	Sep-17	Sep-18	Sep-19
Grays Convent	124	99	102	99	112	113
Harris Academy Chafford Hundred	180	187	192	187	211	212
Harris Free School	120	120	120	120	120	120
The Gateway Academy	210	214	220	214	242	244
The Hathaway Academy	180	141	145	141	159	161
William Edwards	240	255	262	255	288	290
	1,054	1,016	1,041	1,016	1,132	1,140
<b>5% contingency</b>		1,066	1,093	1,067	1,188	1,197
<b>7% contingency</b>		1,087	1,114	1,087	1,211	1,219
<b>10% contingency</b>		1,117	1,145	1,118	1,245	1,254

Subject to Funding Agreement, It is anticipated that the Central Planning Area will benefit from 120 additional Year 7 places in September 2016 as the Harris Federation is working with the DfE to open a new secondary Free School in the area. These places will meet projected demand in the secondary phase.

## East Planning Area





## East Planning Area

East Planning Area	WHOLE SCHOOL FORECAST					
School	PAN	Sep-15	Sep-16	Sep-17	Sep-18	Sep-19
Gable Hall	1,360	1,237	1,249	1,252	1,278	1,316
Hassenbrook Academy	550	451	383	357	350	360
St Clere's	1,155	1,104	1,146	1,179	1,233	1,278
	3,065	2,792	2,778	2,788	2,861	2,954
<b>5% contingency</b>		2,931	2,917	2,927	3,004	3,102
<b>7% contingency</b>		2,987	2,973	2,983	3,062	3,161
<b>10% contingency</b>		3,071	3,056	3,066	3,147	3,249

East Planning Area	YEAR 7 FORECAST					
School	PAN	Sep-15	Sep-16	Sep-17	Sep-18	Sep-19
Gable Hall	272	249	256	249	281	283
Hassenbrook Academy	110	68	70	68	77	77
St Clere's	231	238	245	238	269	271
	613	555	571	555	627	631
<b>5% contingency</b>		583	599	583	658	663
<b>7% contingency</b>		594	610	594	671	676
<b>10% contingency</b>		610	627	611	689	695

There are currently surplus places in this planning area. However the increasing number of children in our primary schools suggests that these places will be needed in the next few years.

### Secondary Forecast Summary

The take up of Year 7 secondary school places by children leaving Year 6 in Thurrock primary schools historically runs at around 93%. The secondary school projections set out above are based on an assumed transfer rate from Year 6 to Year 7 of 100%. In view of the fact that the conversion rate between Year 6 and Year 7 is usually around 93% this means there is a surplus of 7% already built into the secondary projections. We are therefore believe that no additional contingency is necessary. The known child yield from developments submitted for planning approval has been included in the pupil forecasts.

## Authority Wide Issues

The significant increase in the birth rate in Thurrock in recent years has presented the greatest challenge for the authority and, indeed for other authorities in London and the South East. In addition to the rise in the birth rate of around 18%, the conversion rate from live births to Reception applications has increased resulting in an increase in the school population of around 25% in the last 10 years.

The number of applications for school places received from families moving into the Authority after the close of the normal admissions rounds has reached unprecedented levels. See the table below:

Academic Year	No. of children requiring a primary school place outside of the normal admission round who arrived in Thurrock from abroad. "In Year Admissions"	No. of children requiring a primary school place outside of the normal admission round who arrived in Thurrock from elsewhere in the UK. "In Year Admissions"	Total
2012/13	181	455	636
2013/14	189	585	774
2014/15*	199	493	692

\*N.B. 2014/15 figures for 5 months only

The figure for "In Year" applications from families arriving in the Authority for the 2014/15 academic year shown above was accurate at the time of publication but is likely to increase as the academic year continues. The final figure may surpass that for 2013/14. The 692 children who have already applied for an "In Year" primary phase place this academic year represent 4.47% of the primary school population in Thurrock as measured at the November 14 pupil census (15,465 primary number on roll excluding nursery).

Planning for the children arriving in Thurrock is difficult as we do not know who they are, how old they are and, therefore, which year groups they will apply for until they make contact with School Admissions. Some may require Reception and Year 7 places, but many will require places in other year groups. This introduces the potential of bulge classes in year groups other than Reception and Year 7 as we have experienced this year.

The unpredictability of this source of demand requires the Council to build a general contingency into the number of primary school places available across the board to ensure that its obligations can be met.

It is anticipated that the new Pupil Place Planning Sub Group of the Schools Forum will work with the Council to identify how additional supply can be introduced into the school system when necessary.

There is particular pressure on Reception places in the Grays Planning Area where additional places have already been introduced at the Harris Mayflower Academy for September 2015.



The three primary schools in the Rural Planning Area will not be able to cope with the projected demand in that planning area in future years. These schools cannot easily be expanded and therefore it is likely that demand will have to be met by schools in neighbouring planning areas.

The increase in the primary phase population in recent years will feed through to the secondary system and more places will be required from around 2017 or 2018 depending on the impact of inward migration.

## **Annex 1**

### **Pupil Place Forecasting Methodology**

Pupil Place Planning is an important function of the Local Authority as the Council has a statutory obligation to provide sufficient school places. School place forecasts are therefore reviewed regularly and Thurrock publishes forecasts annually.

The recent pattern of inward migration has proved challenging for the Authority. It is difficult to plan for an unknown number of children arriving from outside the Authority requiring school places in all year groups.

The Council uses live birth data to predict the number of children requiring Reception places 4 years later. Each new born child is allocated to a catchment area based on home address. Through the catchment areas the child is notionally attached to a school and is therefore captured in the relevant planning area.

The Reception places in the forecast are calculated on live births plus 7% contingency to accommodate inward migration.

The primary phase whole school forecasts in this report are based on the actual number of children from the pupil census plus 7% contingency to accommodate current trends in inward migration and provide an element of parental choice.

The Council takes account of all new developments in the Authority and calculates the likely child yield from those developments which are then included in the forecasts.

The pupil census data provides details of the number of children in each year group in every school and this information is useful in assessing pressure points in the system such as a shortage of places in a particular year groups.

The number of children attending Thurrock primary schools is a good guide to the number of children requiring secondary school places. Cross border school placements are limited due to geographical and transport constraints.

Historic patterns of attendance are used to help inform the likely take up of available places.

The forecasts are not constrained by the physical accommodation available in the schools in the planning area and therefore indicate where pressure on places is likely to arise.

In 2014, the Schools Forum agreed to the creation of a Pupil Place Planning Sub Group made up of head teacher and governor representatives who will work with the Council to review the pupil place forecasts and decide how best to meet the identified need. The Sub Group will meet for the first time in Spring 2015.

## Annex2

### Special and Additional Needs

New Education, Health and Care Plans are being introduced for children aged 0 – 25 that will replace the current statements of special educational need, and the learning difficulties assessments for young people entering college. There is a new way of working to allow the identification of children and young people's needs, bringing together Education, Health and Social Care support into one plan. It is based on a more family focused approach with a stress on the individual goals for children, improving their opportunities for education and employment.

For children who currently have a statement of special educational needs, their statement and support will remain in place until it is converted to an Education, Health, Care Plan. The Council's SEN team will work with families to transfer the statement according to the Transition Plan which can be found on the website.

Further information on the new Education, Health and Care Plans can be obtained from the Council's website [www.askthurrock.org.uk/kb5/thurrock](http://www.askthurrock.org.uk/kb5/thurrock).

### Provision

The Council has two schools for children who have special needs and are unable to achieve their potential in a mainstream setting.

School	Status	Needs Met	Age Range	Number of Places
Beacon Hill Academy	Academy	Severe and profound learning difficulties	3 to 19	72
Treetops School		Moderate learning difficulties	3 to 19	276

Beacon Hill Post 16 Unit caters for students with severe and profound and multiple learning difficulties from 16 to 19. The Unit is located on the site of Treetops School in Grays. Students follow a personalised, accredited curriculum which promotes independence and transition to lifelong learning in the community.

Treetops is a day special school for pupils between the ages of 3 and 19. The school caters for children and young people with moderate learning difficulties or autism. The school is located in Grays and is an Authority maintained school.

In addition there are a number of mainstream schools with specialist provision in the Primary Sector:

School	Type of Provision	Age Range	Number of Places
Warren Primary	Resource base for pupils with hearing impairment	4-11	14
Stanford Le Hope Primary Academy	Resource base for pupils with visual impairment	4-11	5
Corringham Primary Academy	Resource base for pupils with speech and language	4-11	20

	difficulties		
Harris Primary Academy	ICAN resource base for children with speech, language and communication needs	Nursery age	5FTE
Dilkes Primary Academy	Resource base for pupils with behavioural, emotional and social difficulties	4-11	10
Lansdowne Primary Academy	Resource base for pupils with social communication/moderate learning difficulties	4-11	8

Secondary phase schools with specialist provision are:

<b>School</b>	<b>Type of Provision</b>	<b>Age Range</b>	<b>Number of Places</b>
Ormiston Park Academy	ASCEND unit (BESD)	11-19	15
Harris Academy Chafford Hundred	Resource Base for pupils with speech, language and communication impairment	11-19	20
St Clare's School	Resource Base for pupils with visual and hearing impairment.	11-19	6 in VI Unit 11 in HI

Support is offered to students with special needs post 16 years at Palmers Sixth Form College and South Essex College.

## **Annex 3**

### **Provision for Pupils Out of School**

Thurrock Pupil Support Service provides a broad curriculum to a diverse group of young people across three sites: The Phoenix Primary Centre, the Culver Secondary Centre, the Tuition Centre based at the Culver site and the Assessment Centre.

The service provides education for children and young people who have experienced difficulty learning for a variety of reasons. Each of our sites caters specifically for the identified needs of individual students aged between 5 years and 16 years.

The Pupil Support Service also provides support to students in mainstream schools who experience difficulties and are at risk of exclusion.

Admission to the service is by referral only. All referrals are made via the Council's Access and Inclusion Officer. The service is currently supporting 119 students.

Further information on the Pupil Support Service can be obtained from the Council's website [www.thurrockpss.co.uk](http://www.thurrockpss.co.uk).

## Annex 4 - Post 16 Provision

The 2008 Education Act raised the age of participation for young people in England. Those born on or after 1<sup>st</sup> September 1997 must remain in some form of education or training until their 18<sup>th</sup> birthday. This may be:

- full time education at school or college,
- an apprenticeship or traineeship,
- part time education or training as well as being employed, self-employed or volunteering for 20 hours per week or more.

Thurrock Council works in partnership with schools and other providers to plan provision for post 16 education and training. Young people can pursue a wide range of both academic and vocational courses in a range of settings.

Five secondary schools in Thurrock currently offer post 16 education; however the Gateway Academy has decided to concentrate on 11 to 16 education and is phasing out 6<sup>th</sup> Form provision. The new Harris Academy Free School which will open in September 2015 also intends to offer post 16 courses when the new school building is complete. Gable Hall, Hassenbrook and St Clere's schools form the Stanford and Corringham 6<sup>th</sup> Form consortium and between them provide a range of academic and vocational courses.

The Ockendon Academy Studio School and 6<sup>th</sup> form is a 14 to 19 school offering a range of academic qualifications in addition to work based training. Applications for work based training places in the Studio School should be made via the Council's school admissions team. There are currently 35 places in the Studio School and this number will increase in future.

The table below provides the number of students in Thurrock school 6<sup>th</sup> forms at November 2014. Stanford and Corringham 6<sup>th</sup> Form Gable Hall, Hassenbrook and St Clere's consortium.

Gov	School	12	13	14	Post-16 Total
CA	Gable Hall	160	63		223
VA	Grays Convent				
CA	Harris Academy Chafford Hundred	136	119		255
CA	Hassenbrook Academy				
CA	Ormiston Park Academy	49	43	8	100
CA	St Clere's				
CA	The Gateway Academy		29		29
CA	The Hathaway Academy				
CA	The Ockendon Academy	38	30		68
CA	William Edwards School				

383	284	8	<b>675</b>
-----	-----	---	------------

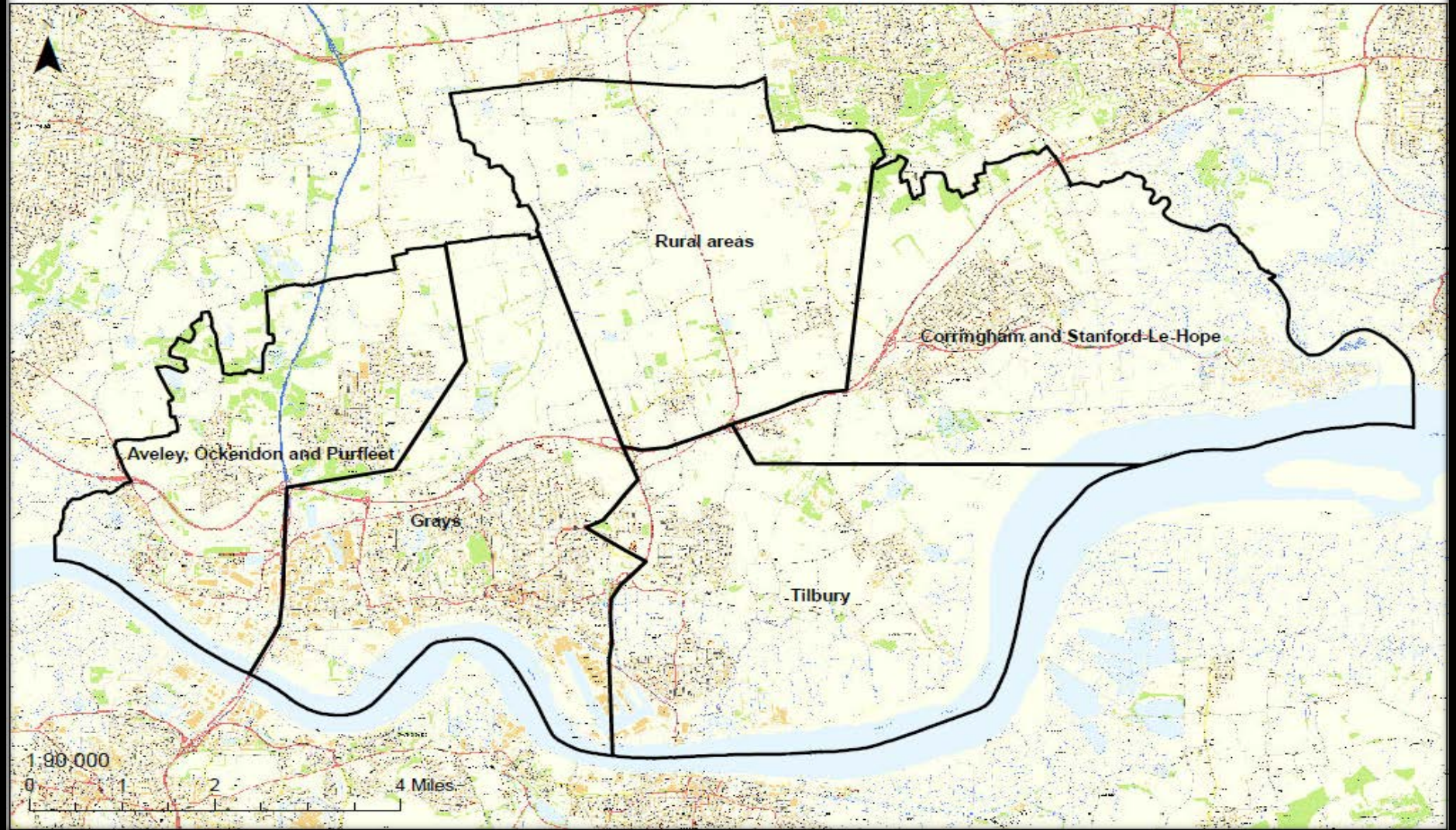
Palmers College in Grays is a 6<sup>th</sup> form college and offers a range of A level, BTEC and secretarial courses to over 2000 students. Find out more about the course on offer on the college website [www.palmers.ac.uk](http://www.palmers.ac.uk)

The recently opened South Essex College of Further and Higher Education in Grays offers a wide range of training opportunities which lead to accredited qualifications. Young people can study anything from bricklaying to costume design.

Full details on the opportunities available to Post 16 students can be found on the UCAS Progress website [www.ucas.com](http://www.ucas.com).

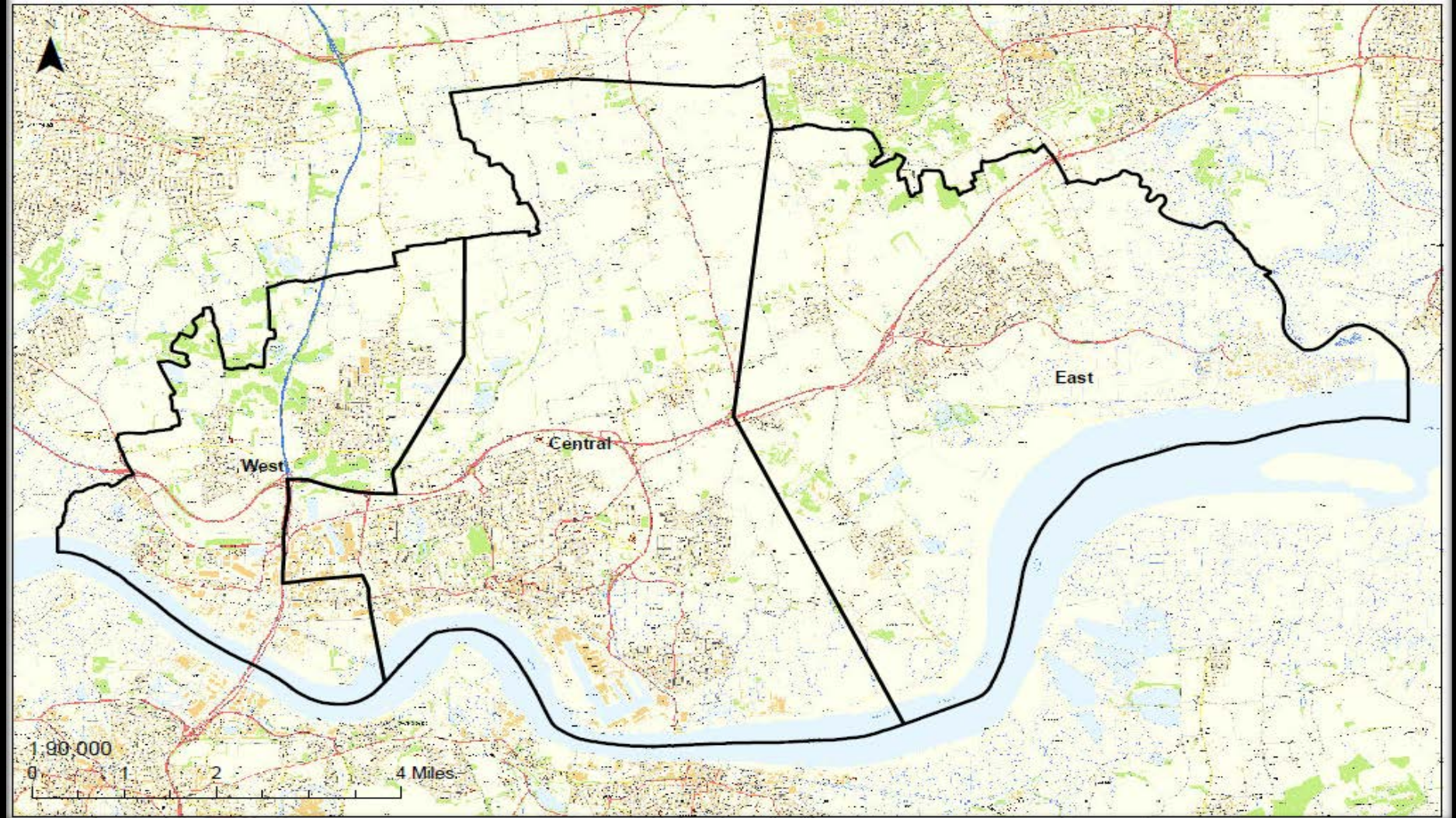


Thurrock - proposed primary phase planning areas





Thurrock - proposed secondary phase planning areas



# PRIMARY FORECAST WHOLE SCHOOL

ANNEX 7

<b>Aveley, Ockendon &amp; Purfleet</b>		<b>WHOLE SCHOOL FORECAST</b>				
<b>School</b>	<b>PAN</b>	<b>Sep-15</b>	<b>Sep-16</b>	<b>Sep-17</b>	<b>Sep-18</b>	<b>Sep-19</b>
Aveley	420	434	435	461	455	429
Benyon	210	214	224	213	216	222
Bonnygate	420	359	375	434	457	458
Dilkes	420	418	414	426	427	426
Holy Cross	315	289	290	295	296	299
Kenningtons	420	426	449	489	503	473
Purfleet	630	440	469	490	517	549
Shaw	420	413	405	407	402	408
Somers Heath	210	213	209	205	198	199
	<b>3,465</b>	<b>3,206</b>	<b>3,270</b>	<b>3,420</b>	<b>3,471</b>	<b>3,463</b>
<b>5% contingency</b>		<b>3,366</b>	<b>3,434</b>	<b>3,591</b>	<b>3,645</b>	<b>3,636</b>
<b>7% contingency</b>		<b>3,430</b>	<b>3,499</b>	<b>3,659</b>	<b>3,714</b>	<b>3,705</b>
<b>10% contingency</b>		<b>3,527</b>	<b>3,597</b>	<b>3,762</b>	<b>3,818</b>	<b>3,809</b>
<b>Grays</b>		<b>WHOLE SCHOOL FORECAST</b>				
<b>School</b>	<b>PAN</b>	<b>Sep-15</b>	<b>Sep-16</b>	<b>Sep-17</b>	<b>Sep-18</b>	<b>Sep-19</b>
Belmont Castle	690	703	727	720	694	664
Deneholm	420	415	412	437	444	444
Harris Chafford Hundred	630	603	579	557	520	520
Harris Mayflower	630	119	179	229	276	366
Little Thurrock	630	598	620	647	636	636
Quarry Hill	420	527	553	568	560	530
St Thomas'	630	628	629	629	629	630
Stifford Clays	630	691	706	723	752	724
Thameside	630	597	621	640	638	644
Tudor Court	840	755	771	780	748	749
Warren	420	453	432	426	409	410
West Thurrock	420	529	572	616	566	539
	<b>6,990</b>	<b>6,618</b>	<b>6,801</b>	<b>6,972</b>	<b>6,872</b>	<b>6,856</b>
<b>5% contingency</b>		<b>6,949</b>	<b>7,141</b>	<b>7,321</b>	<b>7,216</b>	<b>7,199</b>
<b>7% contingency</b>		<b>7,081</b>	<b>7,277</b>	<b>7,460</b>	<b>7,353</b>	<b>7,336</b>
<b>10% contingency</b>		<b>7,280</b>	<b>7,481</b>	<b>7,669</b>	<b>7,559</b>	<b>7,542</b>
<b>Tilbury</b>		<b>WHOLE SCHOOL FORECAST</b>				
<b>School</b>	<b>PAN</b>	<b>Sep-15</b>	<b>Sep-16</b>	<b>Sep-17</b>	<b>Sep-18</b>	<b>Sep-19</b>
Chadwell St Mary	210	208	206	214	232	232
East Tilbury	630	558	593	597	569	605
Gateway	420	506	477	451	420	421
Herringham	420	383	392	394	392	393
Lansdowne	420	605	589	596	595	591
St Mary's	210	255	243	234	229	219
Tilbury Pioneer	420	214	292	349	375	382
Woodside	420	552	559	575	628	630
	<b>3,150</b>	<b>3,281</b>	<b>3,351</b>	<b>3,410</b>	<b>3,440</b>	<b>3,473</b>
<b>5% contingency</b>		<b>3,445</b>	<b>3,519</b>	<b>3,581</b>	<b>3,612</b>	<b>3,647</b>
<b>7% contingency</b>		<b>3,511</b>	<b>3,586</b>	<b>3,649</b>	<b>3,681</b>	<b>3,716</b>
<b>10% contingency</b>		<b>3,609</b>	<b>3,686</b>	<b>3,751</b>	<b>3,784</b>	<b>3,820</b>

**PRIMARY FORECAST WHOLE SCHOOL  
CONTINUED**

ANNEX 7

<b>Corringham &amp; Stanford le Hope</b>		<b>WHOLE SCHOOL FORECAST</b>				
<b>School</b>	<b>PAN</b>	<b>Sep-15</b>	<b>Sep-16</b>	<b>Sep-17</b>	<b>Sep-18</b>	<b>Sep-19</b>
Abbots Hall	210	214	213	208	206	206
Arthur Bugler	420	419	410	402	412	412
Corringham	420	447	451	453	473	471
Giffards	420	405	396	376	361	362
Graham James	420	274	276	279	282	312
St Joseph's	210	268	258	248	238	228
Stanford-le-Hope	420	400	375	392	384	384
	<b>2,520</b>	<b>2,427</b>	<b>2,379</b>	<b>2,358</b>	<b>2,356</b>	<b>2,375</b>
<b>5% contingency</b>		<b>2,548</b>	<b>2,498</b>	<b>2,476</b>	<b>2,474</b>	<b>2,494</b>
<b>7% contingency</b>		<b>2,597</b>	<b>2,546</b>	<b>2,523</b>	<b>2,521</b>	<b>2,541</b>
<b>10% contingency</b>		<b>2,670</b>	<b>2,617</b>	<b>2,594</b>	<b>2,592</b>	<b>2,613</b>
<b>Rural</b>		<b>WHOLE SCHOOL FORECAST</b>				
<b>School</b>	<b>PAN</b>	<b>Sep-15</b>	<b>Sep-16</b>	<b>Sep-17</b>	<b>Sep-18</b>	<b>Sep-19</b>
Bulphan	84	100	102	99	95	90
Horndon-on-the-Hill	210	204	200	190	196	195
Orsett	210	221	231	217	201	201
	<b>504</b>	<b>525</b>	<b>533</b>	<b>506</b>	<b>492</b>	<b>486</b>
<b>5% contingency</b>		<b>551</b>	<b>560</b>	<b>531</b>	<b>517</b>	<b>510</b>
<b>7% contingency</b>		<b>562</b>	<b>570</b>	<b>541</b>	<b>526</b>	<b>520</b>
<b>10% contingency</b>		<b>578</b>	<b>586</b>	<b>557</b>	<b>541</b>	<b>535</b>



# PRIMARY FORECAST RECEPTION

ANNEX 8

<b>Aveley, Ockendon &amp; Purfleet</b>		<b>RECEPTION FORECAST</b>				
<b>School</b>	<b>PAN</b>	<b>Sep-15</b>	<b>Sep-16</b>	<b>Sep-17</b>	<b>Sep-18</b>	<b>Sep-19</b>
Aveley	60	69	55	61	62	62
Benyon	30	36	38	27	32	33
Bonnygate	60	53	55	69	79	64
Dilkes	60	59	54	72	61	62
Holy Cross	45	45	45	45	45	45
Kenningtons	60	80	73	69	73	74
Purfleet	90	89	84	73	74	80
Shaw	60	61	52	61	55	57
Somers Heath	30	29	30	27	23	27
	<b>495</b>	<b>521</b>	<b>486</b>	<b>504</b>	<b>504</b>	<b>504</b>
<b>5% contingency</b>		<b>547</b>	<b>510</b>	<b>529</b>	<b>529</b>	<b>529</b>
<b>7% contingency</b>		<b>557</b>	<b>520</b>	<b>539</b>	<b>539</b>	<b>539</b>
<b>10% contingency</b>		<b>573</b>	<b>535</b>	<b>554</b>	<b>554</b>	<b>554</b>
<b>Grays</b>		<b>RECEPTION FORECAST</b>				
<b>School</b>	<b>PAN</b>	<b>Sep-15</b>	<b>Sep-16</b>	<b>Sep-17</b>	<b>Sep-18</b>	<b>Sep-19</b>
Belmont Castle	90	93	110	97	94	99
Deneholm	60	57	56	86	67	67
Harris Chafford Hundred	90	70	67	67	52	64
Harris Mayflower	90	53	60	50	47	53
Little Thurrock	90	97	97	101	79	94
Quarry Hill	60	83	86	75	79	81
St Thomas'	90	90	90	90	90	90
Stifford Clays	90	95	106	108	117	107
Thameside	90	100	92	100	84	94
Tudor Court	120	95	105	100	89	97
Warren	60	55	62	55	58	58
West Thurrock	60	72	83	102	74	83
	<b>990</b>	<b>960</b>	<b>1,014</b>	<b>1,031</b>	<b>930</b>	<b>987</b>
<b>5% contingency</b>		<b>1,008</b>	<b>1,065</b>	<b>1,083</b>	<b>977</b>	<b>1,036</b>
<b>7% contingency</b>		<b>1,027</b>	<b>1,085</b>	<b>1,103</b>	<b>995</b>	<b>1,056</b>
<b>10% contingency</b>		<b>1,056</b>	<b>1,115</b>	<b>1,134</b>	<b>1,023</b>	<b>1,086</b>
<b>Tilbury</b>		<b>RECEPTION FORECAST</b>				
<b>School</b>	<b>PAN</b>	<b>Sep-15</b>	<b>Sep-16</b>	<b>Sep-17</b>	<b>Sep-18</b>	<b>Sep-19</b>
Chadwell St Mary	30	32	27	36	48	36
East Tilbury	90	85	89	76	67	79
Gateway	60	60	60	60	60	60
Herringham	60	54	59	55	58	57
Lansdowne	90	77	81	91	88	84
St Mary's	30	30	30	30	30	30
Tilbury Pioneer	60	81	78	57	26	61
Woodside	60	105	98	76	113	98
	<b>480</b>	<b>524</b>	<b>522</b>	<b>481</b>	<b>490</b>	<b>505</b>
<b>5% contingency</b>		<b>550</b>	<b>548</b>	<b>505</b>	<b>515</b>	<b>530</b>
<b>7% contingency</b>		<b>561</b>	<b>559</b>	<b>515</b>	<b>524</b>	<b>540</b>
<b>10% contingency</b>		<b>576</b>	<b>574</b>	<b>529</b>	<b>539</b>	<b>556</b>

**PRIMARY FORECAST RECEPTION  
CONTINUED**

ANNEX 8

<b>Corringham &amp; Stanford le Hope</b>		<b>RECEPTION FORECAST</b>				
<b>School</b>	<b>PAN</b>	<b>Sep-15</b>	<b>Sep-16</b>	<b>Sep-17</b>	<b>Sep-18</b>	<b>Sep-19</b>
Abbots Hall	30	32	30	25	28	29
Arthur Bugler	60	62	50	51	70	58
Corringham	60	93	62	62	83	75
Giffards	60	47	50	40	45	46
Graham James	60	56	32	34	33	39
St Joseph's	30	30	30	30	30	30
Stanford-le-Hope	60	54	54	51	67	57
	<b>360</b>	<b>374</b>	<b>308</b>	<b>293</b>	<b>356</b>	<b>334</b>
<b>5% contingency</b>		<b>393</b>	<b>323</b>	<b>308</b>	<b>374</b>	<b>351</b>
<b>7% contingency</b>		<b>400</b>	<b>330</b>	<b>314</b>	<b>381</b>	<b>357</b>
<b>10% contingency</b>		<b>411</b>	<b>339</b>	<b>322</b>	<b>392</b>	<b>367</b>
<b>Rural</b>		<b>RECEPTION FORECAST</b>				
<b>School</b>	<b>PAN</b>	<b>Sep-15</b>	<b>Sep-16</b>	<b>Sep-17</b>	<b>Sep-18</b>	<b>Sep-19</b>
Bulphan	12	12	12	12	12	12
Horndon-on-the-Hill	30	27	27	21	33	27
Orsett	30	34	41	16	19	28
	<b>72</b>	<b>73</b>	<b>80</b>	<b>49</b>	<b>64</b>	<b>67</b>
<b>5% contingency</b>		<b>77</b>	<b>84</b>	<b>51</b>	<b>67</b>	<b>70</b>
<b>7% contingency</b>		<b>78</b>	<b>86</b>	<b>52</b>	<b>68</b>	<b>72</b>
<b>10% contingency</b>		<b>80</b>	<b>88</b>	<b>54</b>	<b>70</b>	<b>74</b>

## SECONDARY FORECAST WHOLE SCHOOL

ANNEX 9

<b>West Planning Area</b>	<b>WHOLE SCHOOL FORECAST</b>					
<b>School</b>	<b>PAN</b>	<b>Sep-15</b>	<b>Sep-16</b>	<b>Sep-17</b>	<b>Sep-18</b>	<b>Sep-19</b>
Ormiston Park Academy	900	455	488	545	563	548
The Ockendon Academy	1,050	1,036	1,060	1,085	1,123	1,156
	1,950	1,491	1,548	1,630	1,686	1,704
<b>5% contingency</b>		1,566	1,625	1,712	1,771	1,790
<b>7% contingency</b>		1,596	1,656	1,745	1,805	1,824
<b>10% contingency</b>		1,641	1,703	1,794	1,855	1,875
<b>Central Planning Area</b>	<b>WHOLE SCHOOL FORECAST</b>					
<b>School</b>	<b>PAN</b>	<b>Sep-15</b>	<b>Sep-16</b>	<b>Sep-17</b>	<b>Sep-18</b>	<b>Sep-19</b>
Grays Convent	620	505	488	477	511	527
Harris Academy Chafford Hundred	900	920	937	939	960	989
Harris Free School			120	240	360	480
The Gateway Academy	1,050	1,022	1,043	1,073	1,105	1,134
The Hathaway Academy	900	671	673	680	725	747
William Edwards	1,200	1,219	1,252	1,275	1,313	1,349
	4,670	4,337	4,513	4,685	4,974	5,226
<b>5% contingency</b>		4,554	4,738	4,918	5,223	5,487
<b>7% contingency</b>		4,640	4,828	5,012	5,323	5,591
<b>10% contingency</b>		4,770	4,964	5,152	5,472	5,748
<b>East Planning Area</b>	<b>WHOLE SCHOOL FORECAST</b>					
<b>School</b>	<b>PAN</b>	<b>Sep-15</b>	<b>Sep-16</b>	<b>Sep-17</b>	<b>Sep-18</b>	<b>Sep-19</b>
Gable Hall	1,360	1,237	1,249	1,252	1,278	1,316
Hassenbrook Academy	550	451	383	357	350	360
St Clere's	1,155	1,104	1,146	1,179	1,233	1,278
	3,065	2,792	2,778	2,788	2,861	2,954
<b>5% contingency</b>		2,931	2,917	2,927	3,004	3,102
<b>7% contingency</b>		2,987	2,973	2,983	3,062	3,161
<b>10% contingency</b>		3,071	3,056	3,066	3,147	3,249

## SECONDARY FORECAST YEAR 7

ANNEX 10

<b>West Planning Area</b>	<b>YEAR 7 FORECAST</b>					
<b>School</b>	<b>PAN</b>	<b>Sep-15</b>	<b>Sep-16</b>	<b>Sep-17</b>	<b>Sep-18</b>	<b>Sep-19</b>
Ormiston Park Academy	180	103	106	104	117	118
The Ockendon Academy	210	216	222	216	244	246
	390	319	328	320	361	364
<b>5% contingency</b>		335	345	336	379	382
<b>7% contingency</b>		342	351	342	386	389
<b>10% contingency</b>		351	361	352	397	400
<b>Central Planning Area</b>	<b>YEAR 7 FORECAST</b>					
<b>School</b>	<b>PAN</b>	<b>Sep-15</b>	<b>Sep-16</b>	<b>Sep-17</b>	<b>Sep-18</b>	<b>Sep-19</b>
Grays Convent	124	99	102	99	112	113
Harris Academy Chafford Hundred	180	187	192	187	211	212
Harris Free School			120	120	120	120
The Gateway Academy	210	214	220	214	242	244
The Hathaway Academy	180	141	145	141	159	161
William Edwards	240	255	262	255	288	290
	934	896	1,041	1,016	1,132	1,140
<b>5% contingency</b>		941	1,093	1,067	1,188	1,197
<b>7% contingency</b>		959	1,114	1,087	1,211	1,219
<b>10% contingency</b>		986	1,145	1,118	1,245	1,254
<b>East Planning Area</b>	<b>YEAR 7 FORECAST</b>					
<b>School</b>	<b>PAN</b>	<b>Sep-15</b>	<b>Sep-16</b>	<b>Sep-17</b>	<b>Sep-18</b>	<b>Sep-19</b>
Gable Hall	272	249	256	249	281	283
Hassenbrook Academy	110	68	70	68	77	77
St Clere's	231	238	245	238	269	271
	613	555	571	555	627	631
<b>5% contingency</b>		583	599	583	658	663
<b>7% contingency</b>		594	610	594	671	676
<b>10% contingency</b>		610	627	611	689	695